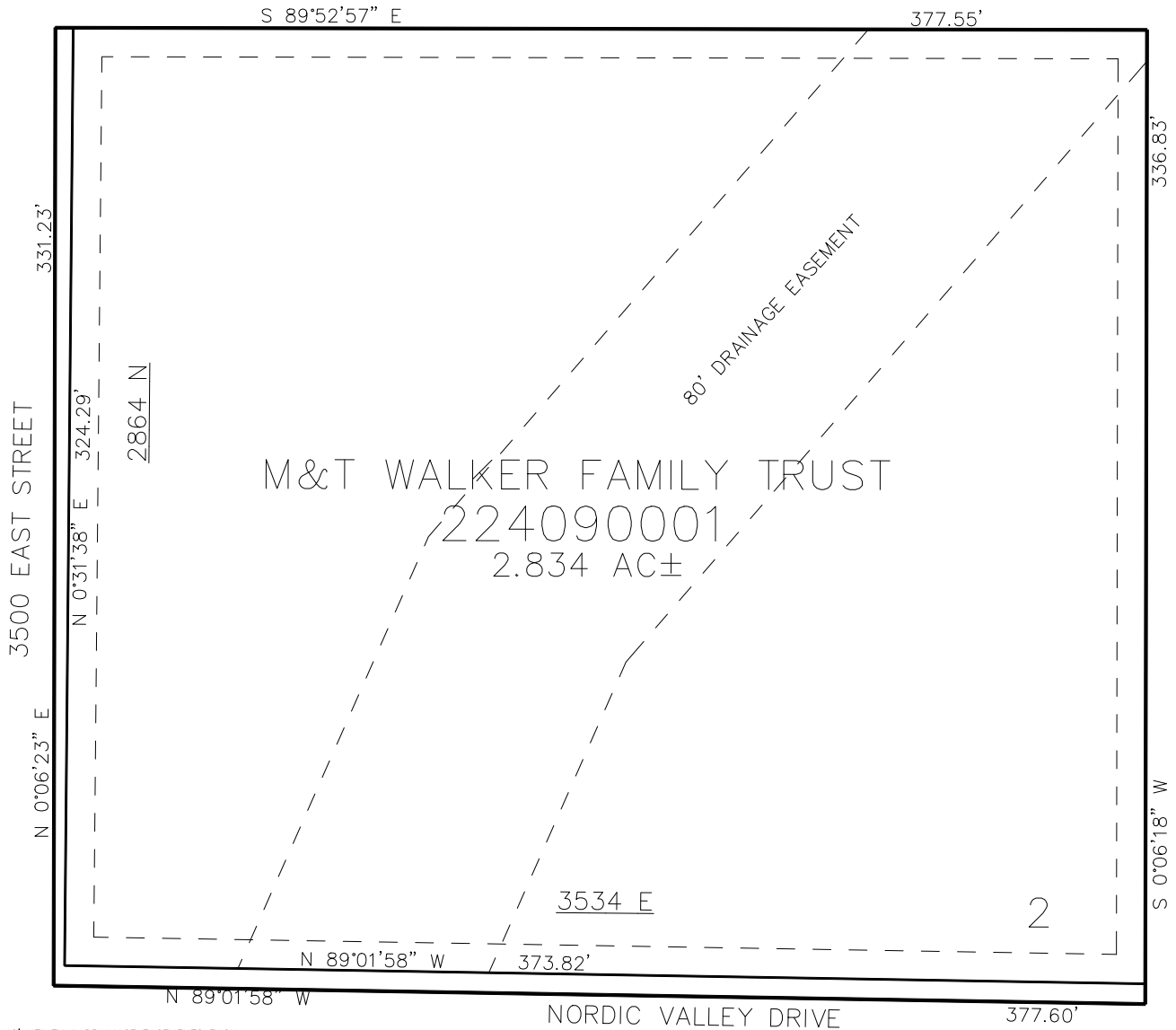


PART OF THE SE. 1/4, OF SECTION 29, T.7N., R.1W., S.L.B. & M.
PASTURE LANE FARMS SUBDIVISION 1ST AMENDMENT

TAXING UNIT: 36

IN WEBER COUNTY
SCALE 1" = 30'

SEE PAGE 23-3



10' UTILITY & DRAINAGE EASEMENTS EACH
SIDE OF PROPERTY LINES AS INDICATED
BY DASHED LINES EXCEPT AS OTHERWISE
SHOWN.

SEE PAGE 23-3

FOR COMPLETE SURVEY DATA SEE
ORIGINAL DEDICATION PLAT IN
BOOK 93, PAGE 82 OF RECORDS.